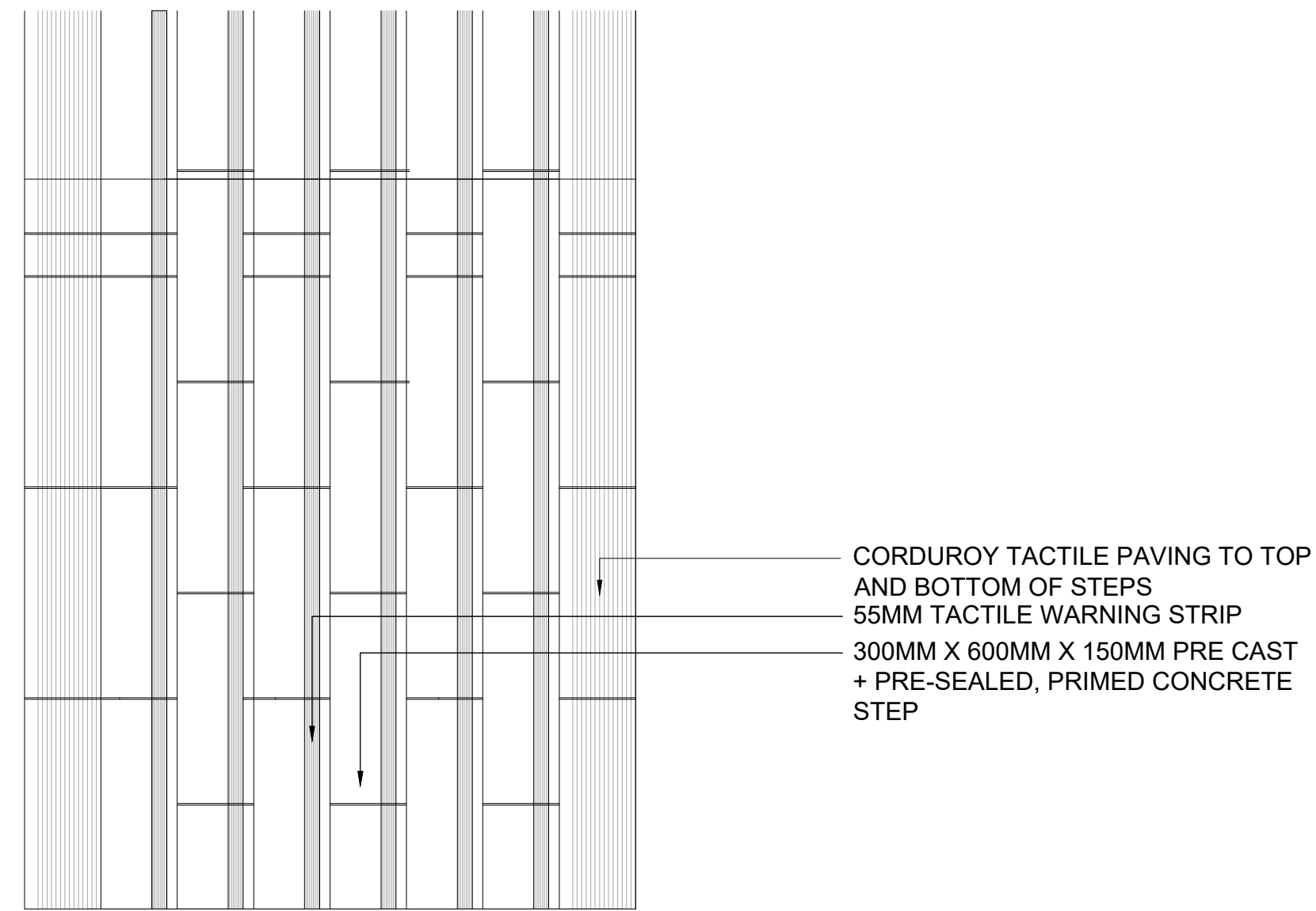
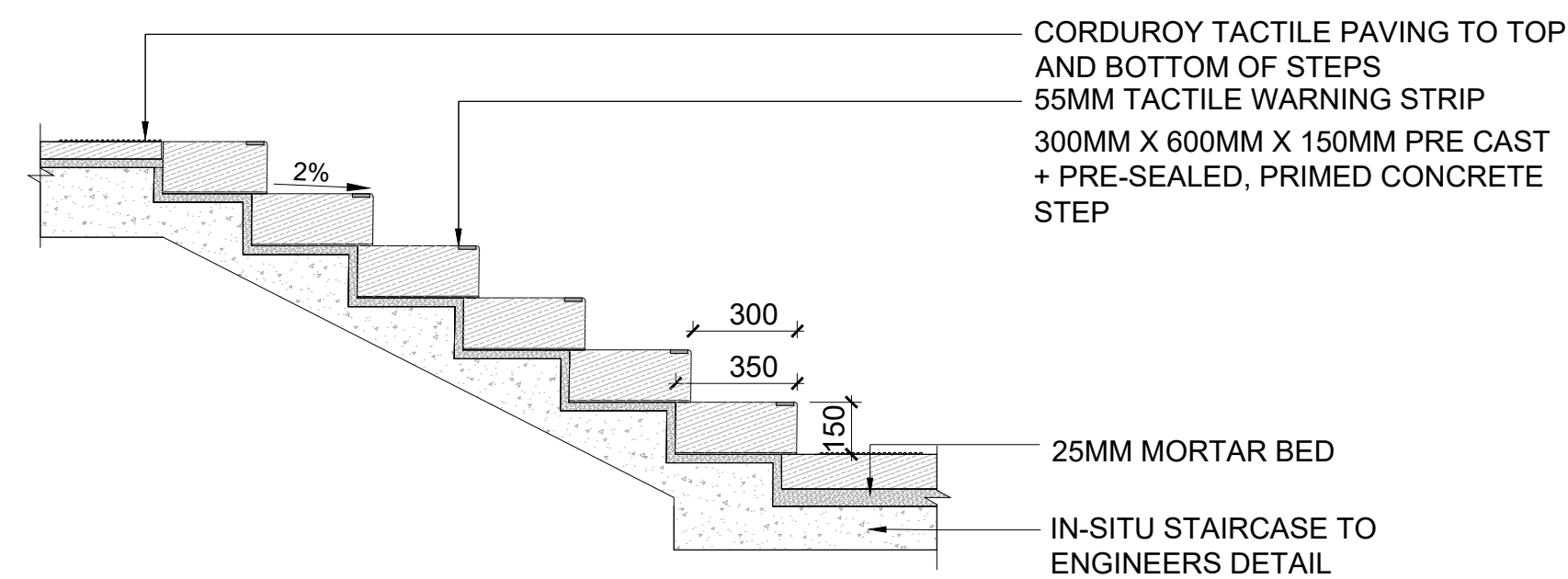


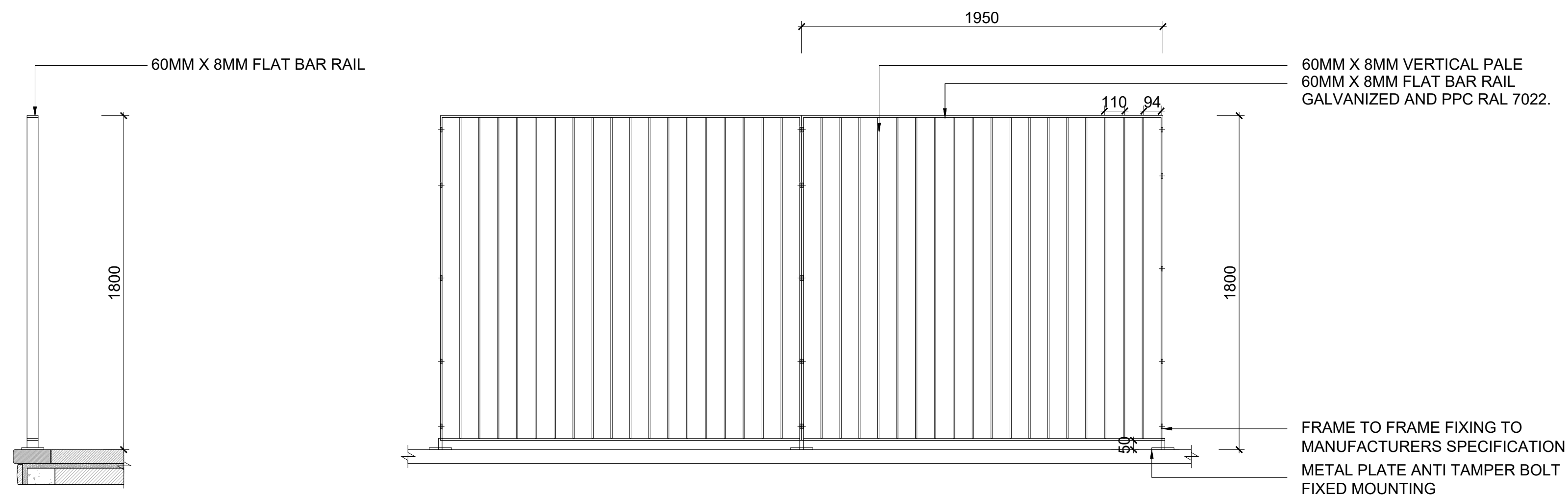
01 R1: TYPICAL RIMINI STAIRCASE RAILING  
SCALE: 1:20@A1



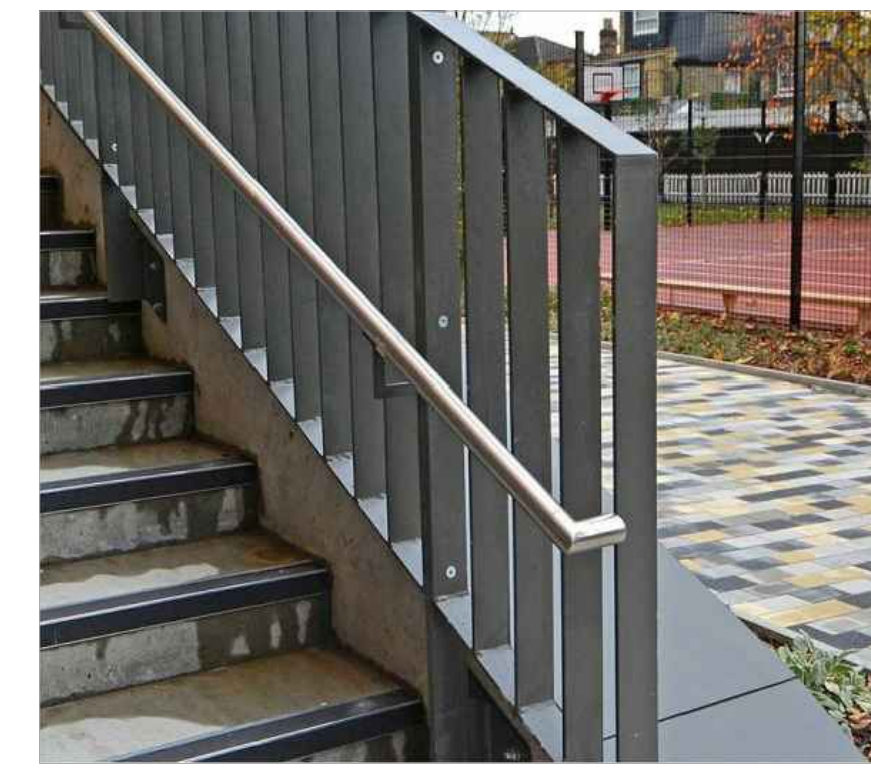
02 S1: TYPICAL STAIRCASE PLAN  
SCALE: 1:20@A1



03 S1: TYPICAL STAIRCASE CROSS SECTION  
SCALE: 1:20@A1



04 R2: TYPICAL 1800 MM HEIGHT GATE DETAIL  
SCALE: 1:20@A1



04 TYPICAL HAND RAIL



05 TYPICAL RAILING



06 TYPICAL RAILING AT STAIR

NOTE  
ALL DIMENSIONS TO BE CHECKED ON SITE  
NO DIMENSIONS TO BE SCALED FROM THIS DRAWING  
THIS DRAWING IS TO BE READ IN CONJUNCTION WITH  
RELEVANT CONSULTANTS DRAWINGS  
NO PART OF THIS DOCUMENT MAY BE REPRODUCED OR  
TRANSMITTED IN ANY FORM OR STORED IN ANY RETRIEVAL  
SYSTEM OF ANY NATURE WITHOUT THE WRITTEN PERMISSION  
OF THE LANDSCAPE ARCHITECT AS COPYRIGHT HOLDER EXCEPT  
AS AGREED FOR USE ON THE PROJECT FOR WHICH THE  
DOCUMENT WAS ORIGINALLY ISSUED  
FOR DRAWING INDEX, GENERAL NOTES, AND HEALTH AND SAFETY REFER TO DWG  
L1001

CLIENT:

**CWTC Multi Family ICAV**  
Acting on behalf of its sub-fund DBTR DR1 Fund

ARCHITECTS: **mahony pike HJL**  
**O'Donnell+Tuomey** ncculloughmulvinarchitects

REFERENCE: THIS DRAWING IS NOT FOR CONSTRUCTION

REVISIONS:			
Job No.	15A5A	Drawn By	RM
Dwg No.	L1-903	Checked By	JM
Scale	AS SHOWN @A1	Date	July 2021

JOB DESCRIPTION	
Site	Holy Cross College, Clontarf Road, Dublin 3 and Drumcondra Road Lower, Drumcondra, Dublin 9
Project	Holy Cross College SHD
Title	DETAILS - STAIRS & RAILINGS